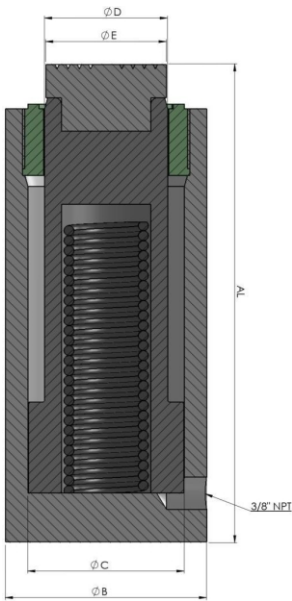


## IPS

### Infratekk General Jack - Plain Ram Spring Return – Single Acting



#### APPLICATION

These jacks are an excellent choice for maintenance, positioning bending, pressing, and production application. Ideal for a wide range of applications at Construction sites, Automobile, Shipyard, Mills, Railway workshops, Power plants and Industrial maintenance.

#### ADVANTAGES/FEATURES

- Heat treated alloy steel body for better life.
- Multipurpose Jack Used Horizontal & Vertical position.
- Maintenance, Fabrication, Construction, Heavy Industries, Power & Process Plants, Sugar Factories, Cement Factories, etc.
- Hard chrome-plated ram to resist scoring & corrosion.
- Single acting, spring return for smooth return.
- High pressure long life seals. Ram wiper protects dirt & foreign material entering cylinder which extends cylinder life.
- Bottom mounting holes, collar threading & tilting saddle are provided on request.
- Connection Port size 3/8 inch NPT.
- Refer Power Pack Page for more details.



**IPS Series** - : Infratekk, **P**: Plain Rod, **S**: Single acting return, **5**: Capacity - ton, **100**: Stroke - mm

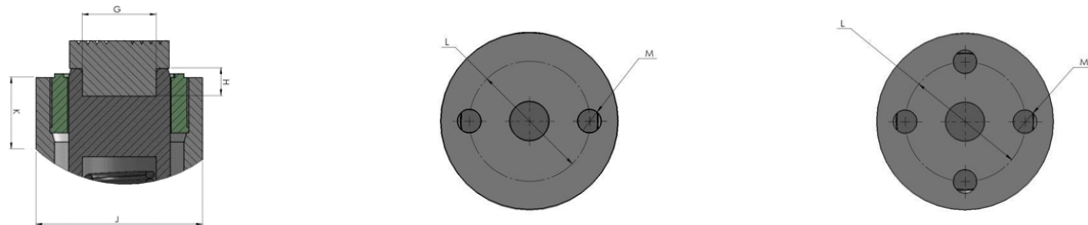
Model	"A" Close Height	Cap. in kN	Stroke in MM	Effective Area in (cm <sup>2</sup> )	Oil Cap in (cc)	"B" Cylinder OD	"C" Cylinder Bore ID	"D" Rod Dia	"E" Saddle Dia	wt. App in (kg)
IPS 5 - 100	185	56	100	8.0	80	45	32	25	25	1.9
IPS 5 - 150	235	56	150	8.0	121	45	32	25	25	2.4
IPS 10 - 100	185	111	100	15.9	159	60	45	35	35	3.2
IPS 10 - 150	235	111	150	15.9	239	60	45	35	35	4.0
IPS 15 - 100	190	167	100	23.8	238	70	55	45	43	5.2
IPS 15 - 150	240	167	150	23.8	356	70	55	45	43	6.3
IPS 20 - 100	195	218	100	31.2	312	80	63	50	48	6.7
IPS 20 - 150	245	218	150	31.2	468	80	63	50	48	8.1
IPS 25 - 100	205	270	100	38.5	385	90	70	55	53	9.0
IPS 25 - 150	255	270	150	38.5	577	90	70	55	53	10.8
IPS 30 - 100	210	309	100	44.2	442	100	75	60	58	11.3
IPS 30 - 150	260	309	150	44.2	663	100	75	60	58	13.6
IPS 50 - 100	225	550	100	78.5	785	130	100	80	78	20.5
IPS 50 - 150	275	550	150	78.5	1178	130	100	80	78	24.5

## IPS

Infratekk General Jack - Plain Ram  
Spring Return – Single Acting

Model	"A" Close Height	Cap. in kN	Stroke in MM	Effective Area in cm <sup>2</sup>	Oil Cap in cc	"B" Cylinder OD	"C" Cylinder Bore ID	"D" Rod Dia	"E" Saddle Dia	wt. App in kg
IPS 75 - 100	230	792	100	113.1	1131	155	120	95	93	29.5
IPS 75 - 150	280	792	150	113.1	1696	155	120	95	93	35.0
IPS 100 - 100	235	1077	100	153.9	1539	180	140	110	108	40.5
IPS 100 - 150	285	1077	150	153.9	2309	180	140	110	108	48.0
IPS 150 - 100	250	1589	100	227.0	2270	220	170	140	138	65.5
IPS 150 - 150	300	1589	150	227.0	3405	220	170	140	138	77.0
IPS 200 - 100	265	2199	100	314.2	3142	255	200	160	158	91.0
IPS 200 - 150	315	2199	150	314.2	4712	255	200	160	158	106.5
IPS 250 - 100	270	2661	100	380.1	3801	280	220	180	177	114
IPS 250 - 150	320	2661	150	380.1	5702	280	220	180	177	133
IPS 300 - 100	285	3167	100	452.4	4524	310	240	200	196	149
IPS 300 - 150	335	3167	150	452.4	6786	310	240	200	196	173
IPS 400 - 100	315	4008	100	572.6	5726	350	270	220	216	209
IPS 400 - 150	365	4008	150	572.6	8588	350	270	220	216	239

## IPS-T



**T:** collar threading with bottom Mounting Holes

Model	"G" Ram Internal Threading	"H" Threading Depth	"J" Collar Threading	"K" C T Length	"L" Bottom Mounting HOLES & PCD	"M" Bottom Threading Size	Threaded Depth
IPS -T 5	M16 X 2P	15	M45 X 2P	25	25 X 2	M6	12
IPS -T 10	M22 X 2P	17	M60 X 2P	30	40 X 2	M8	12
IPS -T 15	M22 X 2P	20	M70 X 2P	30	45 X 2	M8	12
IPS -T 20	M24 X 2P	25	M80 X 2P	35	55 X 2	M8	12
IPS -T 25	M24 X 2P	25	M90 X 2P	40	60 X 2	M10	16
IPS -T 30	M30 X 2P	25	M100 X 3P	40	65 X 2	M10	16
IPS -T 50	M42 X 2P	25	M130 X 3P	40	90 X 2	M10	16
IPS -T 75	M48 X 2P	25	M155 X 3P	40	110 X 2	M10	16
IPS -T 100	M48 X 2P	25	M180 X 3P	40	125 X 4	M12	16
IPS -T 150	M82 X 2P	25	M220 X 3P	50	150 X 4	M16	18
IPS -T 200	M90 X 2P	25	M255 X 3P	50	180 X 4	M16	22